

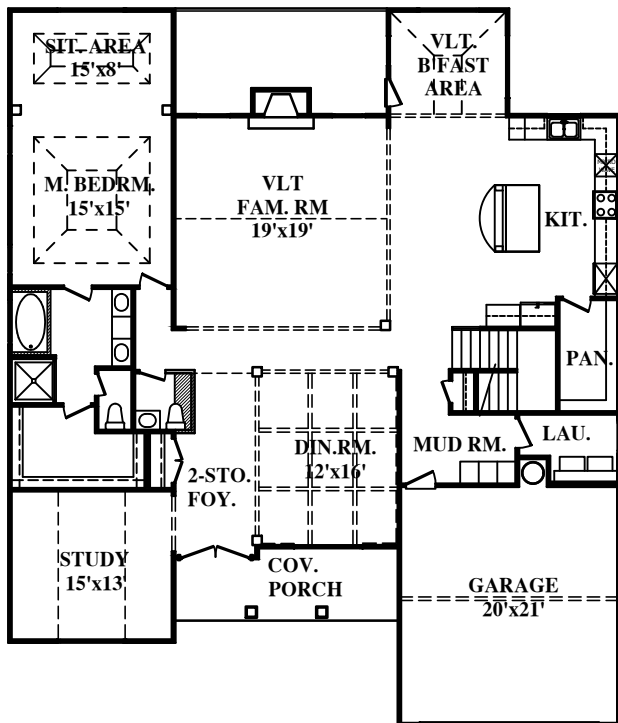
# GRAYCLIFF @ SOUTHPOINT WOODS



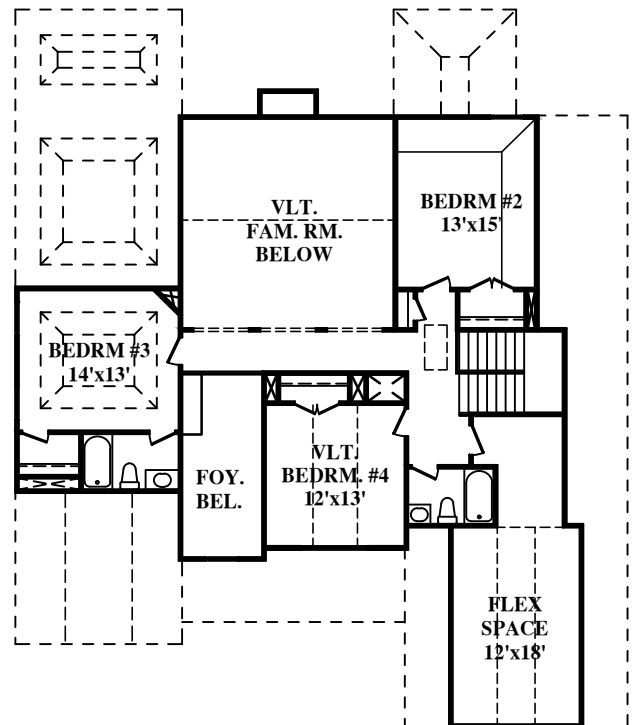
## R-3576



**TOTAL HEATED 3,576 HSF**



**FIRST FLOOR 2,424 HSF**



**SECOND FLOOR 1,152 HSF**

RENDERINGS ARE FURNISHED AS A GUIDE ONLY, ACTUAL CONSTRUCTION AND DIMENSIONS MAY VARY.